

M/7300, 3/2 Manually actuated sleeve valves



- Port size: G1/8 ... G1/2
- Sliding sleeve operation
- Very compact in-line units
- Easy to install
- Very simple and reliable operation
- 3/2 function

Technical features

Medium:
Compressed air, filtered, lubricated and non-lubricated

Operation:
Sleeve valve, directly actuated, with open exhaust

Operating pressure:
10 bar(145 psi) max.

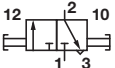
Mounting:
Concentrically directly in the pipework

Port sizes:
G 1/8, G 1/4, G 3/8, G 1/2

Ambient/Media temperature:
-20 ... +80°C max. (-4 ... +176°F)
Air supply must be dry enough to avoid ice formation at temperatures below +2°C (+35°F).

Materials:
Body: Chrome-nickel plated brass
Sleeve: Grey anodised aluminium
Seals: NBR

Technical data

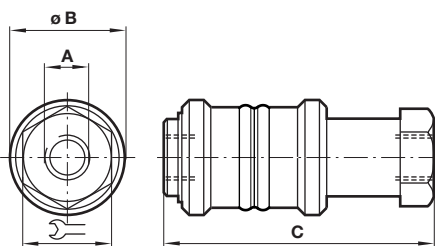
Symbol	Port size	Flow 1 » 2 at 6 » 5 bar (Nl/min)	Weight (kg)	Model
	G1/8	376	0,05	M/7318
	G1/4	775	0,08	M/7328
	G3/8	1590	0,15	M/7338
	G1/2	3025	0,22	M/7348


Option selector

M/73★★

Port size	Substitute
1/8"	18
1/4"	28
3/8"	38
1/2"	48

Dimensions



A	ØB	C		Model
G1/8	25	48	14	M/7318
G1/4	30	58	17	M/7328
G3/8	35	70	22	M/7338
G1/2	40	80	26	M/7348

Warning

These products are intended for use in industrial compressed air systems only. Do not use these products where pressures and temperatures can exceed those listed under

»Technical features/data«.

Before using these products with fluids other than those specified, for non-industrial applications, life-support systems or other applications not within published specifications, consult Norgren.

Through misuse, age, or malfunction, components used in fluid power systems can fail in various modes.

The system designer is warned to consider the failure modes of all component parts used in fluid power systems and to provide adequate safeguards to prevent personal injury or damage to equipment in the event of such failure.

System designers must provide a warning to end users in the system instructional manual if protection against a failure mode cannot be adequately provided.

System designers and end users are cautioned to review specific warnings found in instruction sheets packed and shipped with these products.