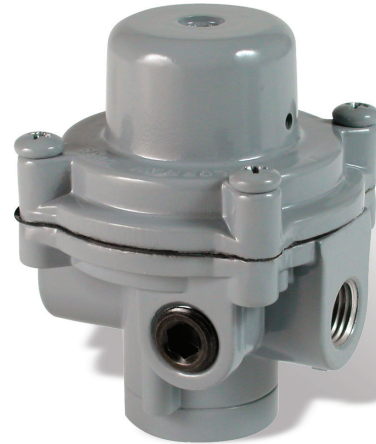


P800 Relief Valve

The 800 is a direct operating, in-line, factory preset relief valve for use in pneumatic applications that warrant protection from over pressurization. The P800 is used primarily between a pneumatic instrument and a supply regulator to limit the instrument supply pressure to 50 PSIG in the case of a supply regulator failure.

Applications

- Instrument air supply
- Rolling diaphragm for enhanced accuracy
- Tamper resistant spring case



P800 Part Matrix

P80002		000000	
	↑		Output Pressure Setting
	xxx		Enter Pressure in PSIG setting Desired Minimum 2 PSIG (002) Maximum 50 PSIG (050)
		000000	

Specifications

Non-rising Adjustment Assembly		
Large 0.344 Relief Seat Diameter		
Large Diaphragm Area		
1/4 NPT Ports		
Factory Preset	Plugged and Tamper Resistant	
1/2 NPT Tapped Vent		
Weight Approximate		
	0.56 lb	0.25 kg
Temperature Range		
	20° to 150°F	-29° to 66°C

Accessories

	Part Number
Mounting Bracket	607-000-057

